

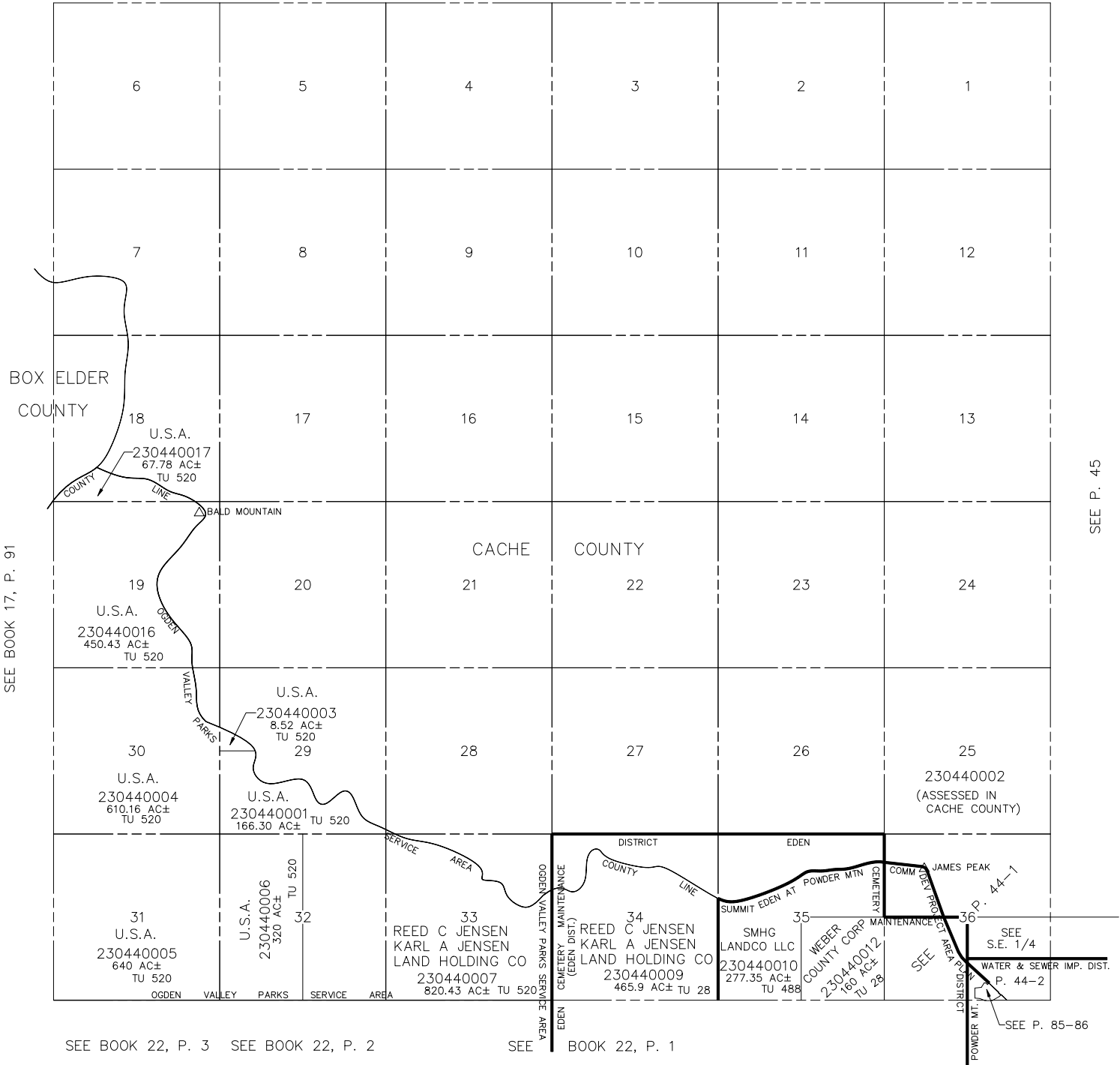
T.8N., R.1E., S.L.B.&M.

IN WEBER COUNTY

SCALE 1" = 2400'

TAXING UNIT: 28, 58, 90, 488, 520

ALSO SEE P. 44-1, 44-2



SEE BOOK 17, P. 91

SEE P. 45

SEE BOOK 22, P. 3 SEE BOOK 22, P. 2

SEE BOOK 22, P. 1

NOTE: WEBER/BOX ELDER ASSESSMENT LINE CHANGED TO COUNTY LINE - 1994

NOTE: WEBER/CACHE ASSESSMENT LINE CHANGED TO COUNTY LINE - 1995